

# MANI®



# Ophthalmic Knife

## Crosslapped Edge

Crosslapped edge provides better sharpness

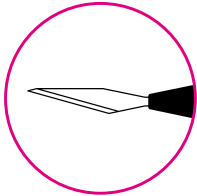
The material is strong and break-resistant  
MANI's original hard fiber stainless steel



# MANI® Ophthalmic Knife

## Straight Knife

6pcs/box



MST



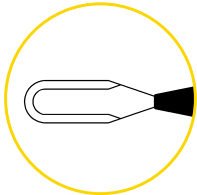
actual size

Product Name	ORDER#
Straight 15.0°	MST15
Straight 22.5°	MST22
Straight 30.0°	MST30
Straight 45.0°	MST45

## Crescent Knife

Angle = 60°

6pcs/box



MCU·MCD·MCS  
MCB



actual size

Product Name ( Blade Width )	ORDER#
Crescent Bevel Up (2.3mm)	MCU26
Crescent Bevel Up (2.0mm)	MCU20
Crescent Bevel Down (2.3mm)	MCD26
Crescent Straight (2.3mm)	MCS26

## Mini Crescent Knife

Angle = 25°

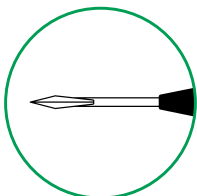
6pcs/box

Product Name ( Blade Width )	ORDER#
Crescent Double Bevel (1.0mm)	MCB10
Crescent Double Bevel (1.25mm)	MCB12

## MVR Knife

Angle = 45°

6pcs/box



MVR·MPK



actual size

- ※ 1. MVR25 can go inside 23G infusion cannula and be used for membrane peeling.
- ※ 2. MPK25 can go inside 25G infusion cannula and be used for membrane peeling.

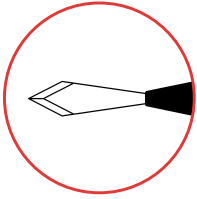
Product Name ( Blade Width )	ORDER#
MVR-Lance 19G (1.5mm)	MVR19
MVR-Lance 20G (1.2mm)	MVR20
MVR-Lance 23G (0.9mm)	MVR23
MVR-Lance 24G (0.8mm)	MVR24
MVR-Lance 25G* <sup>1</sup> (0.55mm)	MVR25
MVR-Angled 19G (1.5mm)	MVR19A
MVR-Angled 20G (1.2mm)	MVR20A
MVR-Angled 21G (1.1mm)	MVR21A
MVR-Angled 23G (0.9mm)	MVR23A
MVR-Angled 24G (0.8mm)	MVR24A
MVR-Angled 23G (0.7mm)	MVR23AD
Port Knife 25G* <sup>2</sup> (0.45mm)	MPK25

The crosslapped edge made of MANI's original hard fiber stainless steel produces the ultimate in sharpness.

## Slit Knife

Angle = 45°

6pcs/box



MSL·MSS



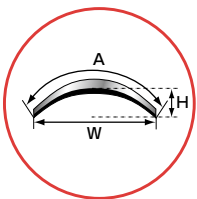
actual size

Product Name	ORDER#
Slit Angled 1.0mm	MSL 10
Slit Angled 1.1mm	MSL 11
Slit Angled 1.2mm	MSL 12
Slit Angled 1.3mm	MSL 13
Slit Angled 1.4mm	MSL 14
Slit Angled 1.6mm	MSL 16
Slit Angled 1.8mm	MSL 18
Slit Angled 1.9mm	MSL 19
Slit Angled 2.0mm	MSL 20
Slit Angled 2.1mm	MSL 21
Slit Angled 2.2mm	MSL 22
Slit Angled 2.3mm	MSL 23
Slit Angled 2.4mm	MSL 24
Slit Angled 2.5mm	MSL 25
Slit Angled 2.65mm	MSL 26
Slit Angled 2.75mm	MSL 27
Slit Angled 2.8mm	MSL 28
Slit Angled 2.9mm	MSL 29
Slit Angled 3.0mm	MSL 30
Slit Angled 3.2mm	MSL 32
Slit Angled 3.5mm	MSL 35
Slit Straight 1.0mm	MSS 10
Slit Straight 2.8mm	MSS 28
Slit Straight 3.0mm	MSS 30

## Arched Knife

Angle = 45°

6pcs/box



MSL--AB

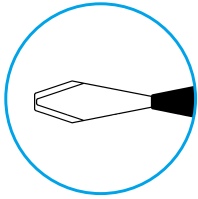
Product Name ( Blade Width )	ORDER#
Slit Angled 1.8mm Arched (A 1.8mm W 1.7mm H 0.3mm)	MSL 18 AB
Slit Angled 2.0mm Arched (A 2.0mm W 1.85mm H 0.35mm)	MSL 20 AB
Slit Angled 2.2mm Arched (A 2.2mm W 2.05mm H 0.35mm)	MSL 22 AB
Slit Angled 2.5mm Arched (A 2.5mm W 2.4mm H 0.35mm)	MSL 25 AB
Slit Angled 2.65mm Arched (A 2.65mm W 2.5mm H 0.35mm)	MSL 26 AB
Slit Angled 2.8mm Arched (A 2.8mm W 2.6mm H 0.4mm)	MSL 28 AB
Slit Angled 3.0mm Arched (A 3.0mm W 2.8mm H 0.45mm)	MSL 30 AB
Slit Angled 3.2mm Arched (A 3.2mm W 3.0mm H 0.55mm)	MSL 32 AB
Slit Angled 3.4mm Arched (A 3.4mm W 3.2mm H 0.55mm)	MSL 34 AB

# MANI® Ophthalmic Knife

## R Slit Knife (Implant)

Angle = 45°

6pcs/box



MRS

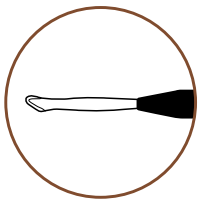


actual size

Product Name	ORDER#
R Slit Angled 2.6mm	MRS 2 6
R Slit Angled 3.2mm	MRS 3 2
R Slit Angled 3.5mm	MRS 3 5
R Slit Angled 3.75mm	MRS 3 7
R Slit Angled 4.1mm	MRS 4 1
R Slit Angled 5.2mm	MRS 5 2
R Slit Angled 5.5mm	MRS 5 5

## Golf/Scleral Knife

6pcs/box



MGL

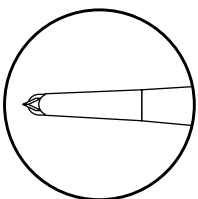


actual size

Product Name	ORDER#
Golf/Scleral 2.4mm	MGL 2 4

## LRI Knife

6pcs/box



MLR



actual size

Product Name	ORDER#
LRI 550µm (0.55mm)	MLR 5 5
LRI 600µm (0.60mm)	MLR 6 0

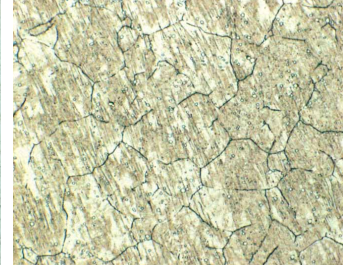
## The details of "Ultimate in Sharpness"



MANI's original hard fiber stainless steel (Austenite Stainless Steel) is a source of strength and which has ensured thin but strong edge. (Edge thickness of crescent knife MANI: 0.14mm Company A : 0.18mm)



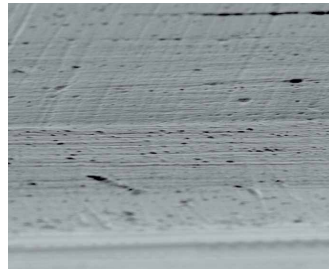
Structure of MANI hard fiber stainless steel



Structure of other's stainless steel



MANI fine-processing technique has created the crosslapped edge, which provides excellent sharpness and consistent quality. (Crosslapped edge: polishing direction is vertical of the edge)



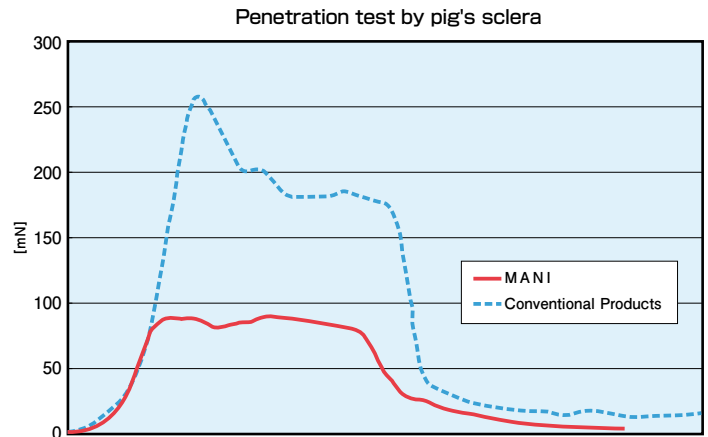
MANI crosslapped edge



Other's edge

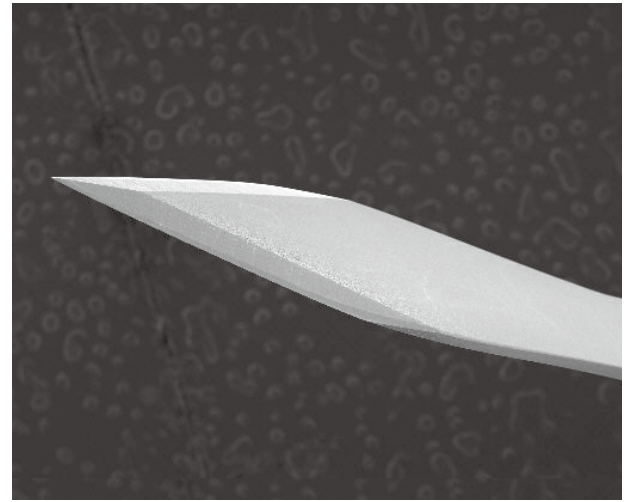


MANI has intensively focused on cutting quality in developing our ophthalmic knives. The edge created by the original processing techniques provides "Ultimate in Sharpness" and minimizes tissue damage.





—Wide Variety of Colors and Models—



—Micro Sharpening Technology—  
( Enlarged photo of MANI Ophthalmic Knife )

Do you know this is another MANI?  
MANI surgical needles occupy 70% and above of total production volume in Japan and 90% and above of export sales from Japan.  
In addition, MANI files and reamers occupy 35% and above in the global market.

MANI wishes human good health and contributes to the medical treatment in the world. Instruments of MANI obtain deep trust at medical treatment sites more than 120 countries in the world for over 50 years.

**THE BEST QUALITY  
IN THE WORLD,  
TO THE WORLD.**

MANI Instruments are distributed to medical field through following channels.

- Excellent Medical wholesalers in Domestic & Foreign market.
- Excellent Export Trading Companies.

<http://www.mani.co.jp> E-mail:[ophthalmic@ms.mani.co.jp](mailto:ophthalmic@ms.mani.co.jp)



▲MANI TAKANEZAWA Factory



▲MANI KIYOHARA Factory

Distributed by



8-3 KIYOHARA INDUSTRIAL PARK, UTSUNOMIYA,  
TOCHIGI, 321-3231, JAPAN  
Phone:+81286677565 Fax:+81286676177

O 00612 (121203)